

HotFlux[®]

Product Information

FEATURE

- Low irritation
- Long lasting warming sensation

INCI NAME:

Vanillyl butyl ether

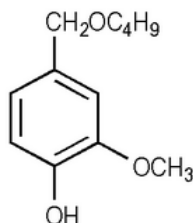
CAS No.

82654-98-6

ELINCS No.

444-010-7

STRUCTURE



CHARACTERISTICS

Appearance	Colorless to pale yellow liquid
Odour	Typical

SPECIFICATIONS

Purity (GC) (%)	98.00 Min.
Moisture (%)	0.20 Max.
Specific gravity (20°C)	1.052-1.072
Refractive index (20°C)	1.5110-1.5210

DESCRIPTION

HotFlux[™] is a warming agent with low irritation profile. HotFlux[™] can be added to enhance and length the cooling effect.

STORAGE

Protect from contacting with air, light, heat and moisture. Do not expose to extreme temperature. (Storage temperature: Below 20°C)

APPLICATIONS

It is suggested for massage cream/oil, warming cream/oil and slimming cream/oil. It is recommended to add into the formulation at the last step.